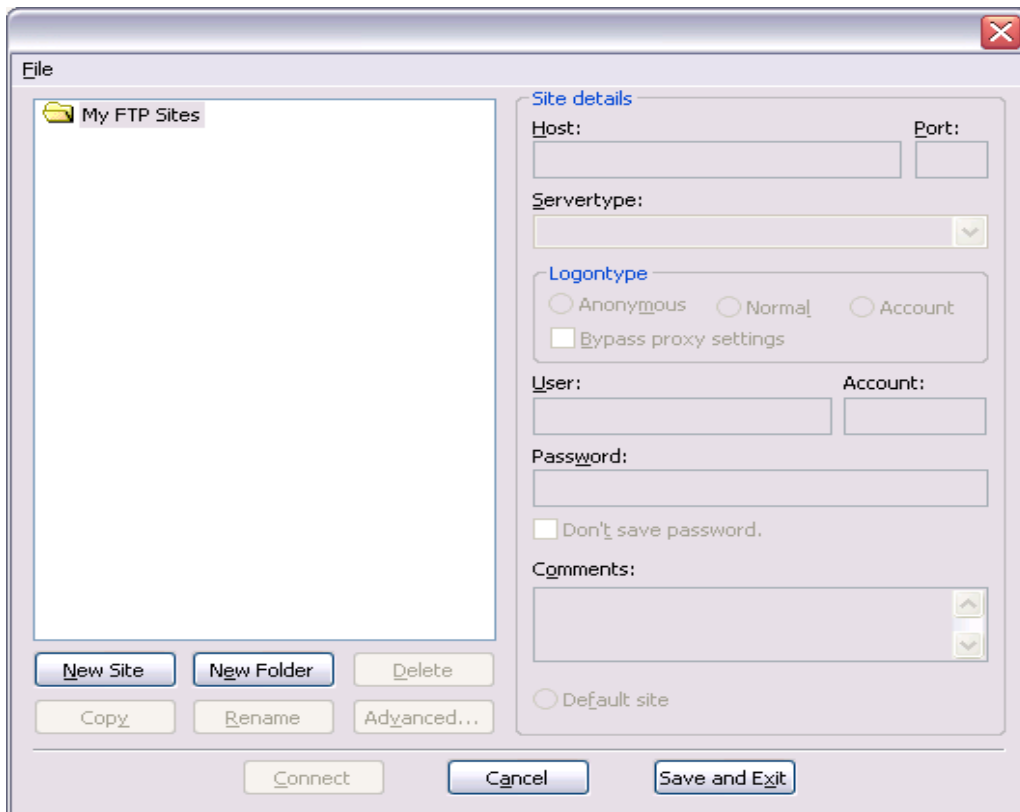


Installing FileZilla

1. Go to http://sourceforge.net/project/showfiles.php?group_id=21558 and download the latest version of FileZilla for Windows to your Desktop.
2. Double-click on the downloaded .exe file.
3. Accept the default language (English). Click **OK**.
4. Accept the License Agreement. Click **I Agree**.
5. Accept the default (Standard) components listing. Click **Next**.
6. Accept the default Install Location. Click **Next**.
7. Accept the Default Start Menu Folder. Click **Next**.
8. Accept the default settings and click **Install**:
 - o Do not use secure mode. (Allows your password to be saved)
 - o Use XML file
9. Click **Close** to complete the installation.

SFTP Connection to Personal Website on Fallon (Students)

1. Select **File/Site Manager** to open **Site Manager** window (shown below).



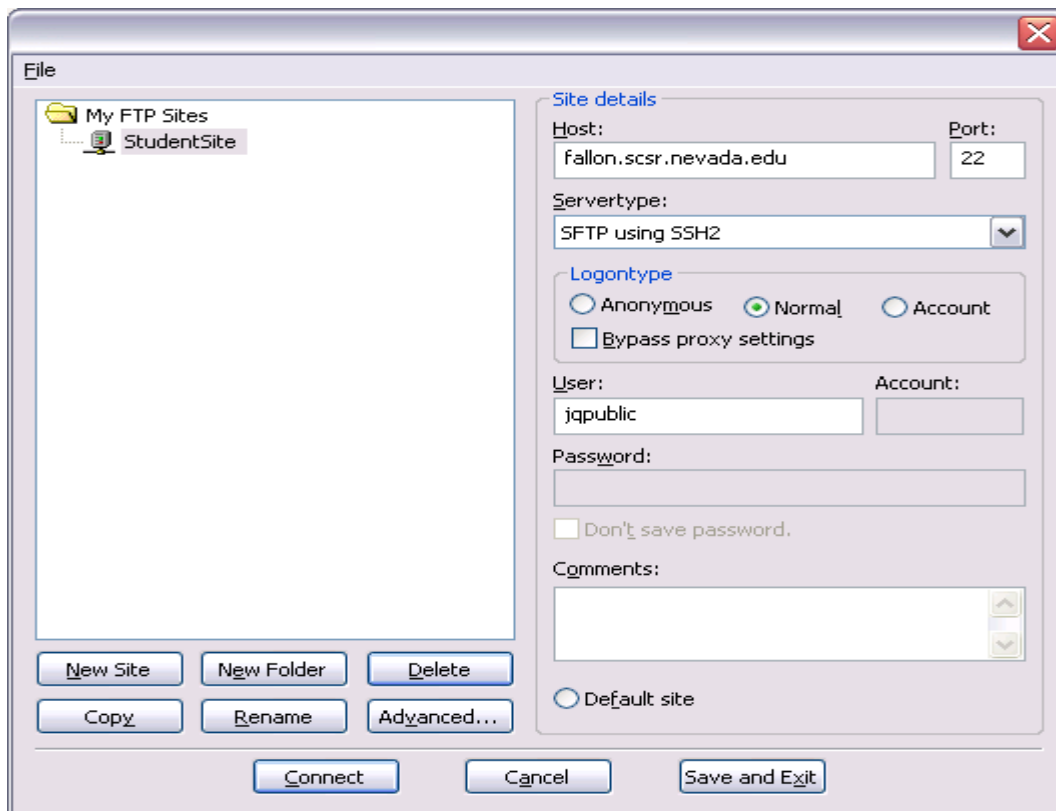
2. Click once on **New Site**.

3. **New FTP Site** displays. Click **Rename**.

- Type a name for the new connection, e.g., **StudentSite**.

4. Enter the following information under **Site Details** (right side) as shown below:

- **Host:** Type **fallon.scsr.nevada.edu**
- **Servertype:** Select **SFTP using SSH2**
- **Logontype:** Select **Normal**
- **User:** Type your Fallon username (portion of email address to left of @ sign). Example:
jqpublic



- Press **Connect**
- **Password:** Type your Fallon email password

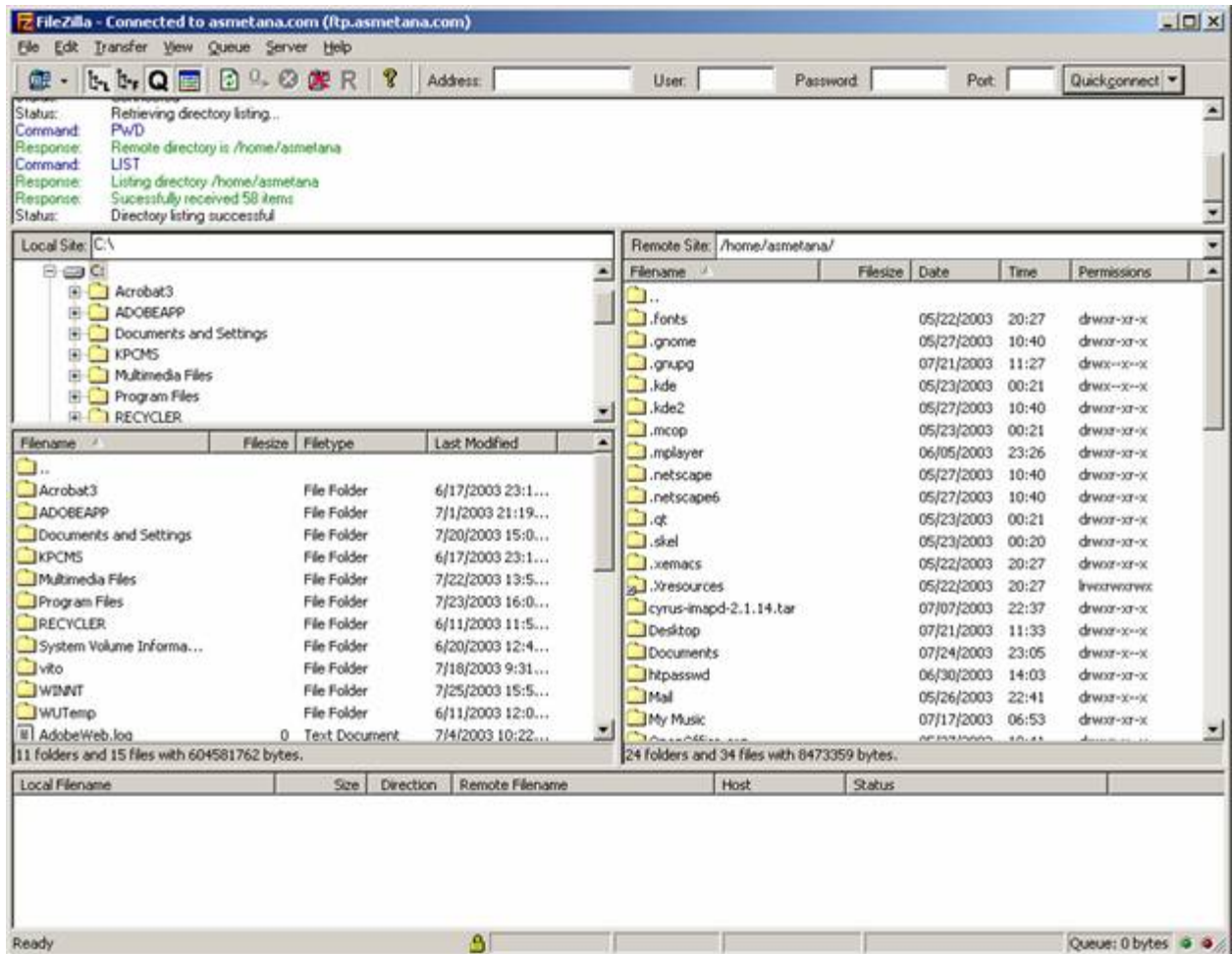


- Press OK
5. On first time connection to a new site, you see a window asking to cache a server host key. To accept, click **Yes**.



Once you are successfully connected, the FileZilla window should look similar to the image below.

- Connection information is displayed in the top horizontal window.
 - Drive selections and file listings for your local machine (PC) are shown middle left (under Local Site).
 - Folder locations and files on the server are shown on the middle right side (under Remote Site).
2. Once connected, double-click the folder named **public_html** in the panel labeled **Remote Site** in the center right of FileZilla window. All files and subfolders of the website are contained within the **public_html** folder.



To terminate a connection:

Select **File/Disconnect**

Uploading/Downloading Files

1. To upload files from your PC to the server:

- From FileZilla window, select the files or directories under Local Site.
- Under Remote Site, browse to the directory where you want to upload the documents.
- Right click the directory and select **Upload**.

2. To download files from the server to your local PC:

- Under Local Site, select the location on local machine to store downloaded files.
- Under Remote Site, select files to download.
- Right click the file and select **Download**.

